

Wyoming MACHINERY
COMPANY



Safety - Integrity - Commitment - Excellence - Teamwork

Product Support Handbook



Our Commitment to Excellence

Wyoming Machinery Company takes pride in our commitment to supporting our customers, our employees, and the communities in which we work. Our devotion to taking care of our employees and customers result in experienced employees working with dedicated customers.

- In 2014 we were recognized by Caterpillar as number one in Dealer Excellence, a measurement used to identify its top performing dealerships.
- We have long been recognized by Caterpillar as a five-star contamination control dealership, which ensures all work is being performed free of any potentially harmful contaminants.
- Our support of the local United Way in each of our locations, through employee donations and a company match, has continually placed Wyoming Machinery Company as one of the top givers in our communities.
- We combine with the Caterpillar Dealer Excellence Fund to provide support for career development and training of specialized technicians by contributing to technical programs across Wyoming.
- In 2014, we were awarded the State of Wyoming's safety award for large industry, recognizing our dedication to provide a safe work environment. The average tenure for our service technicians, including shop, field, and warehouse technicians, is over 12 years.



Table of Contents

Locations	Page 3
Ease of Doing Business	Page 4
Capabilities	Page 5-6
Product Support Sales Representative	Page 7-8
Partnership Inventory	Page 9-10
Delivery Information	Page 11-12
Returns	Page 13-14
Component Rebuild Center.....	Page 15
CRC Scheduling Form	Page 16
5 Star Contamination Control	Page 17
Drive Train / Track Shops	Page 18
Machine Shop	Page 19
Hydraulic Shop	Page 20
Onsite Field Welding & Machining.....	Page 21
Welding Shop	Page 22
Fluid Analysis Lab.....	Page 23
Parts.Cat.Com	Page 24
Warranties Available	Page 25
Cat Financial	Page 26

Locations

Casper

5300 West Old Yellowstone Highway
Casper, WY 82604
Tel: (307) 472-1000
Fax: (307) 260-4486



Cheyenne

7819 Hutchins Dr.
Cheyenne, WY 82007
Tel: (307) 638-7900
Fax: (307) 633-2525



Gillette

5505 Mohan Road
Gillette, WY 82718
Tel: (307) 686-1500
Fax: (307) 686-3961



Rock Springs

1940 Elk Street
Rock Springs, WY 82901
Tel: (307) 392-6500
Fax: (307) 922-5549



www.wyomingcat.com
info@wyomingcat.com



Ease of Doing Business

Wyoming Machinery Company works closely with Cat Financial to bring you a large variety of buying options that will help meet the needs of your business. Your company will conserve cash and you can get your equipment out to the jobsite faster with a customized finance option.

- Quick Approvals
- Simple Documentation
- Quick and Easy Financing
- Competitive Rates
- Customized Payment Plans
- 100% Financing – Available to qualified customers

Submit a Credit Application Today

To apply for credit with Wyoming Machinery Company, complete and return both pages of the Credit Application found in the Customer tab at www.wyomingcat.com.

Submit your application with a copy of your ID using one of the methods below:

1. Email - creditapplications@wyomingcat.com
2. Fax - Attn: Credit Department 307-261-4486
3. Mail - Attn: Credit Department P.O. Box 2335 Casper, WY 82602

For more information regarding Cat Financing or applying for a line of credit, contact the Accounts Receivable Department at 307-472-1000 ext. 7823.



Capabilities

Machine Service

- Service on all Cat machines; large, medium or compact
- Computer-aided diagnostics & analysis
- Warranty service
- Allied equipment service
- Cat certified powertrain rebuilds
- Caterpillar certified rebuilds
- DPF Cleaners
- Tier IV emissions tooling/testing

Field & Lube Services

- 24-hour on-call
- Field service techs
- Dedicated lube truck
- No enviro charges
- No supplies charge
- No fuel surcharges
- Portable bore welding
- Welding

Parts & Service Sales Reps

- Dedicated parts & service consultants
- Custom track inspections
- Machine condition inspections

Electric Power Generation (EPG) Service

- Customizable maintenance plans
- Load bank testing
- Inspection reports & recommendations
- Inspections and repairs on all makes & models

Parts

- Orders are filled off the shelf
- Free store-to-store freight on in-stock parts
- Ship to drop box
- Over 20 drop boxes across Wyoming
- Daily shipments from Cat parts distribution warehouse
- 24/7 online parts ordering
- Emergency after-hour parts delivery
- Genuine Cat parts
- Cat Reman parts
- Exchange component inventory

Track Service

- Caterpillar custom track service
- 4 dedicated track presses (D3-D11)
- Portable track presses
- Pin and bushing turns
- Idler resurfacing
- Roller reshelling
- Nitrogen test and fill
- Undercarriage management programs

Hydraulic Service

- All brands repaired
- Cylinder rebuild, repair, re-rod, re-tube and fabrication
- Extended re-chroming availabilites
- Cylinder honing up to 21" diameter and 19' long
- Pump and motor rebuilding and testing
- Estimated 30 minute hose build at all locations
- Hydraulic hammer reconditioning
- Lapping machine, UT, pneumatic cylinder

Capabilities

Machine Shop, Welding & Specialty Services

- General welding and repairs-in shop or portable
- MIG, TIG, semi-automatic welding
- Line boring from 1" to 24" diameter
- Head pattern cutter
- Key seating
- 2 transmission performance test cells
- 2 large capacity paint booths
- Large capacity shot blast booth
- Abrasion resistant material application
- Portable Line bore/mill/lathe work
- On-site repair
- Engine block & head repair/ C175-3300

Certified Rebuild Center

- Dedicated engine rebuild facility
- Fuel system performance test cell
- 5 Star contamination control
- Complete machine shop service
- Magnaflux magnetic particle block and head inspection
- In-house block machining of small up to 3520 size engines
- 3 engine dynos capable of testing engines up to 8,000 HP

Business Solutions

- Five progressive levels from basic connections to total repair and maintenance service
- Maintenance plans for machines and engines
- S.O.S., scheduled oil sampling and analysis
- Coolant and fuel sampling and analysis
- GPS remote machine health monitoring and geofencing

Truck Service

- Scheduled maintenance
- Total truck service
- Tune-ups
- Bearing roll-ins
- Engine in-frame OPT overhauls
- Out-of-frame overhaul
- Taylor Chassis Dyno capable of testing 1,000 Hp
- Drive train service including transmission, clutch, torque converter and differential
- DOT inspections
- AC, electrical, cooling and heating service
- Refrigerator unit service
- Suspension service
- Brakes & wheel service
- ABS Certified Eaton Transmissions

Product Support Sales Representatives



Stacey Anderson
ProductSupportSalesRepresentative

Casper Store
O: 307-472-1000 ext. 1145
C: 307-421-5369
E: sjanderson@wyomingcat.com



James Sheets
ProductSupportSalesRepresentative

Cheyenne Store
O: 307-638-7900 ext. 1526
C: 307-630-3202
E: jcsheets@wyomingcat.com



Matt Tebussek
Inside Sales Representative

Cheyenne Store
O: 307-638-7900 ext. 1529
C: 307-640-2189
E: mptebussek@wyomingcat.com



Pete Halverson
Inside Sales Representative

Casper Store
O: 307-472-1000 ext. 1184
C: 307-215-6313
E: PBHalverson@wyomingcat.com

Our diverse and knowledgeable team of Product Support Sales Representatives are trained to assist you in keeping your machines running efficiently and safely. Count on your PSSR to show you how to maximize your machine's performance and utilization.

Wyoming MACHINERY
COMPANY

CAT

Product Support Sales Representatives



David Bankenbush
ProductSupportSalesRepresentative

Gillette Store
O: 307-686-1500 ext. 1982
C: 307-257-3184
E: djbankenbush@wyomingcat.com



Daren Krei
ProductSupportSalesRepresentative

Gillette Store
O: 307-686-1500 ext. 2004
C: 307-257-0871
E: dwkrei@wyomingcat.com



Greg Pollick
ProductSupportSalesRepresentative

Gillette Store
O: 307-686-1500 ext. 1954
C: 307-689-7484
E: ghpollick@wyomingcat.com



Mike Hilton
ProductSupportSalesRepresentative

Rock Springs Store
O: 307-362-6500 ext. 1606
C: 307-350-8277
E: mahilton@wyomingcat.com



Dallas Latham
ProductSupportSalesRepresentative

Rock Springs Store
O: 307-362-6500 ext. 1623
C: 307-365-1068
E: DRLatham@wyomingcat.com



Partnership Inventory

In addition to the complete line of Caterpillar parts, we have also partnered with the following companies to help fill our customer's needs.

Atlas Copco

Allmand

ACS Industries

ADCo (Hensley)

AlliedSystems(HysterWinch)

AmericanCompactionSpecial

Amulet MFG

API

Attachments International

Balderson

Barber-Greene

Bradco Trenchers

Bron RWF Industries

Brunner & Lay

C&P Attachments Inc.

Carco Winch

Caron Compactor

Cascade Corporation

Construction Tech (CTI)

CWS Industries (MFG) Corp.

Diamond Ripper (Cabs)

Donaldson Filtration Solutions

Dura-Lite Heat Transfer Products

Dura-Tuff Wear Products LLC.

Elliot Attachments Inc.

Elpha Hose Protectors

Erskine Manufacturing Inc.

Felco Industries LTD.

Felling Trailers Inc.

FFC

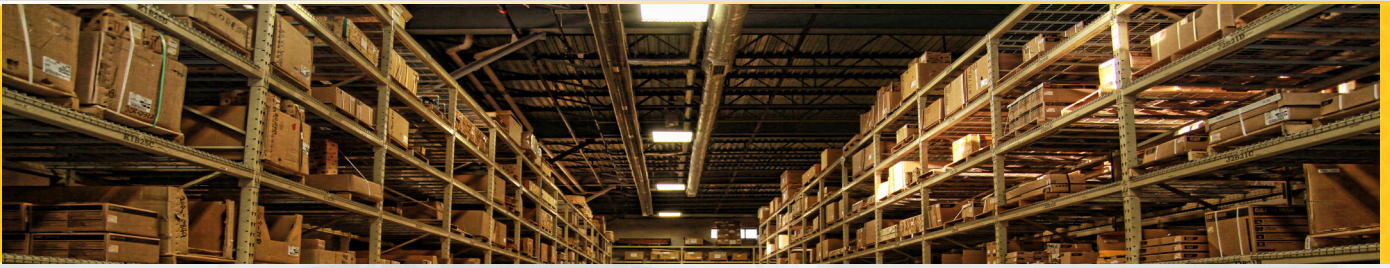
Ground Force Water Tanks

Guest Ind

Henke

HKX Industries.

Ingersol Rand



JRB

Kim Hotstart

Level Best ATI Corp.

Liftking Industries Inc.

Loadking

Lowe MPG

Ly Cox Enterprises

Martin Cab

MasterCraft Industrial Equipment

McMillen ATI

Mega Corp

Mitsubishi Caterpillar

Monico

Multi Quip

Olympian Generators

Pioneer Pump

Pro Match

PSM

Rockland Manufacturing Company

Rome Plow

RPM Tech Inc.

Ryland Industries Inc.

Smith Co Trailers

Sollair

Star Industries

Sy-Klone

Tag Manufacturing

Thermo-Tec Automotive Inc.

Torqued Heat

Towmaster Trailers

Vail Products

Wahl Instruments

Weldco-Beales

Werk Brau

Wilkins Industries

Delivery Information

For complete delivery schedule, please see your PSSR as departure time and place are subject to change.

COMPLETE PARTS INVENTORY

Wyoming Machinery Company is your complete source for all your Caterpillar parts needs. To ensure that you get the parts you need fast we stock thousands of top-quality OEM parts for all makes and models.

DAILY PARTS DELIVERY

We offer quick and convenient delivery to save you time and money.

As a Caterpillar dealer, we are supported by one of the most advance parts distribution networks in North America, giving you access to a wide range of top-quality new and remanufactured parts and components. With access to a global parts distribution chain, we are regularly supplied with time critical deliveries to get you the parts you need, when you need them.

Our goal is simple: The right parts, the right price, at the right time.

ADDITIONAL SERVICES

In addition to parts distribution, Wyoming Machinery Company's regionally located specialized services such as our Component Rebuild Center and Fluid Analysis Lab become extensions of every Wyoming Machinery Company location.

Our expertise includes equipment management services, advanced technical support, emissions compliance solutions, on-site fluid analysis lab, rental and used inventory, Caterpillar-trained shop and field service technicians. We now provide on-site field welding and machining services. Talk to your Wyoming Machinery Company Sales Representative today or visit www.wyomingcat.com for a complete list of services.



Scheduled Delivery Routes and Service Locations



LEGEND

Wyoming Machinery Company

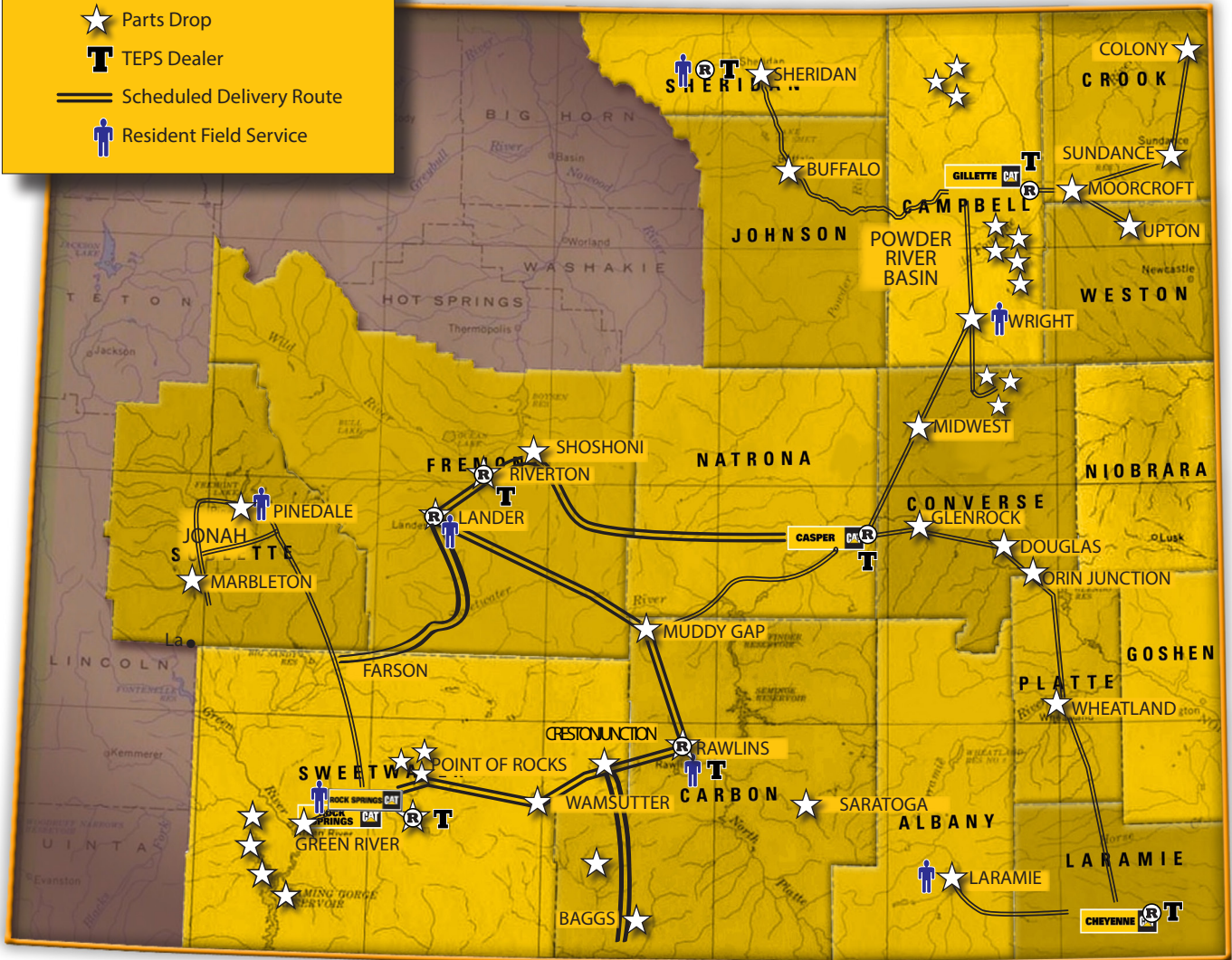
Cat, The Rental Store

Parts Drop

TEPS Dealer

Scheduled Delivery Route

Resident Field Service



Drop Box Locations

Buffalo
Johnson County Road & Bridge
76 North Main Street
Buffalo, WY 82834
(307) 684-7555

Baggs
Country Road 701
Baggs, WY 82321
(307) 472-1000

Baggs
185 Buckskin Drive
Baggs, WY 82321
(307) 362-6500

Creston Junction
(307) 362-6500

Glenrock
Dave Johnston Power Plant

Douglas
North Park Transportation
741 South Riverbend
Douglas, WY 82633
(307) 358-5915

Lander
Artery Construction
57 Tweed Lane
Lander, WY 82520
(307) 472-1000

Laramie
Albany County Shop
2920 County Shop Road
Laramie, WY 82070
(307) 638-7900

Marbleton
R.S. Bennett Construction
601 North Hwy. 189
Marbleton, WY 83113
(307) 276-3383

Midwest
Junction of 387 and 259
(307) 472-1000

Muddy Gap Junction
Left Side of 287
(307) 472-1000

Orin Junction
Orin Junction Truck Shop
US Hwy 18

Pinedale
Teletractor
120 North Coulter Ave
Pinedale, WY 82941
(307) 367-6264

Rawlins
Wyoming Diesel Service
2305 East Daley
Rawlins, WY 82301
(307) 324-7774

Riverton
Wyoming Rents, LLC
10651 Hwy 789
Riverton, WY 82501
(307) 857-2802

Rock Springs
Wyoming Machinery Company
1940 Elk St.
Rock Springs, WY 82901
(307) 362-6500

Saratoga
Carbon County Road & Bridge
425 E. River St.
Saratoga, WY 82331
(307) 326-5681

Sheridan
Steve's Truck Service
124 Canfield
Sheridan, WY 82801
(307) 674-8474

Shoshoni
Shell Gas Station
Hwy 20-26

Wamsutter
Basic Energy Yard
792 Tipton Road
Wamsutter, WY 82901
(307) 328-0660

Wheatland
1003 16th Street
Wheatland, WY 82201
(307) 333-2640

Returns Policy

WYOMING MACHINERY COMPANY PARTS RETURN POLICY

Surplus parts are an unnecessary cost to you and added expense for Wyoming Machinery Company. It is important to keep surpluses to a minimum, and handle them as inexpensively as possible. It is our sincere intention to be equitable in crediting for surpluses.

Parts returned within fifteen (15) days of purchase, if the parts were purchased on a stock order-with packing list or parts tag: No Restock Charge

Parts returned within fifteen (15) days of purchase, if emergency ordered-with packing list or parts tag: 10% Restock Charge

Parts returned due to a duplicate order from 0 to 60 days with packing list or parts tag: 15% Restock Charge

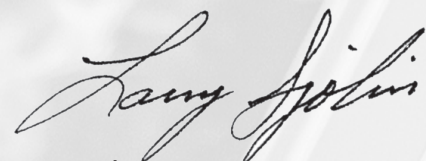
Parts returned after 15 to 60 days of purchase with a packing list or parts tag: 15% Restock Charge

Clean out returns or purchases over 60 days or without packing list or parts tag: 25% Restock Charge

Note: Other parts (not Caterpillar) will be subject to the manufacturer's charges.

Unacceptable Parts:

- (1) Those in non-salable condition.
- (2) Parts not stocked by Wyoming Machinery Company and not returnable to Caterpillar.
- (3) Parts stocked by Wyoming Machinery Company with less than \$35.00 extended value.
- (4) Parts not stocked by Wyoming Machinery Company but returnable to Caterpillar with less than \$55.00 extended value.
- (5) Hose, tubing, seal stock, etc. not acceptable for credit in units of one meter or less.
- (6) Custom hoses assemblies.
- (7) Made as ordered parts or special order parts.



Larry Sjolin
Vice President of Product Support

Core Returns

Wyoming Machinery Company values your time and resources. Thus, we have included a few important return guidelines to assist you in a quick and effective return process:

- All core parts must be returned within thirty (30) days of purchase.
- All core parts must be fully assembled and complete.
- Core parts must not have any non-operational damage; rust, pitting, cracks, torch marks, grinder marks, anything that was not due to normal operational use.
- Core parts must show no previous attempts to salvage.
- Core parts must be returned in the original packaging OR packaged adequately to prevent damage during shipping.
- A fully completed core return tag must be attached to the returning item. For your convenience, we have provided a sample core tag below:

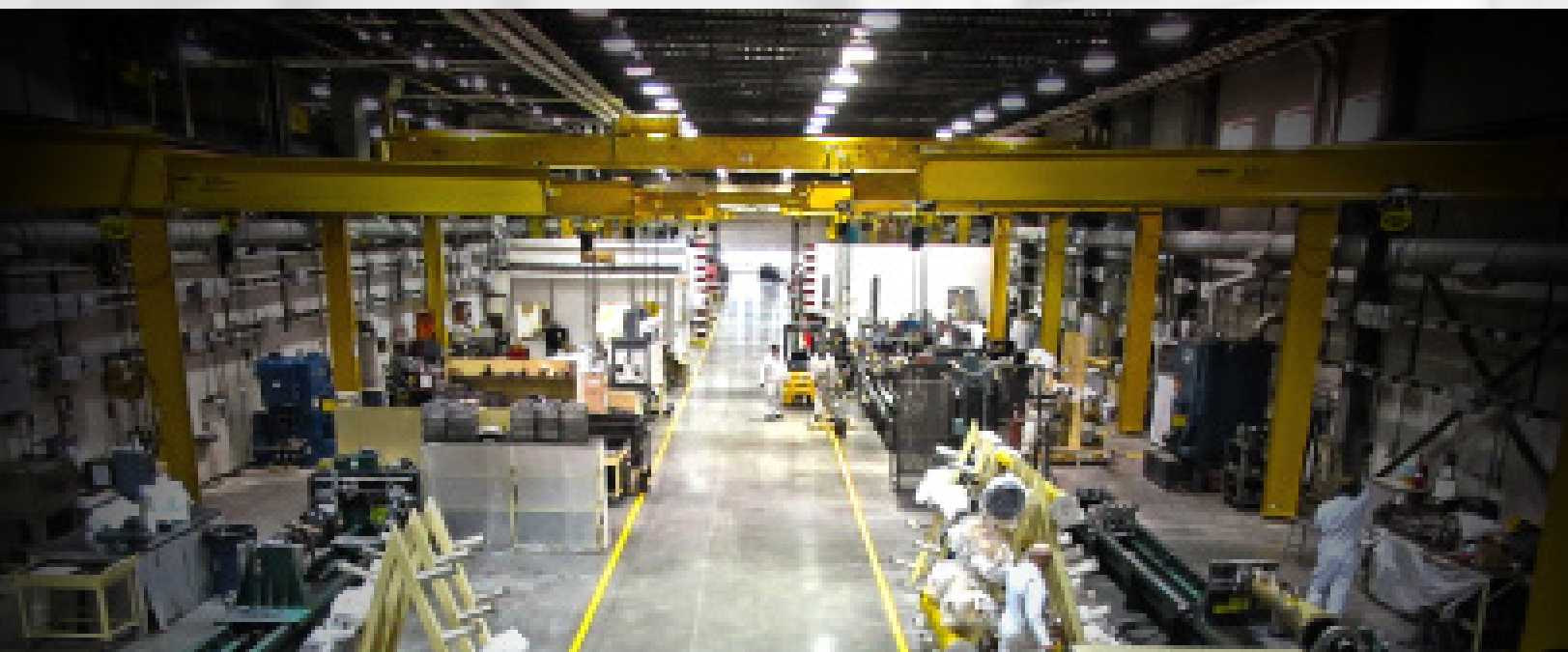
Return tags are available at will call, drop boxes, or company locations.

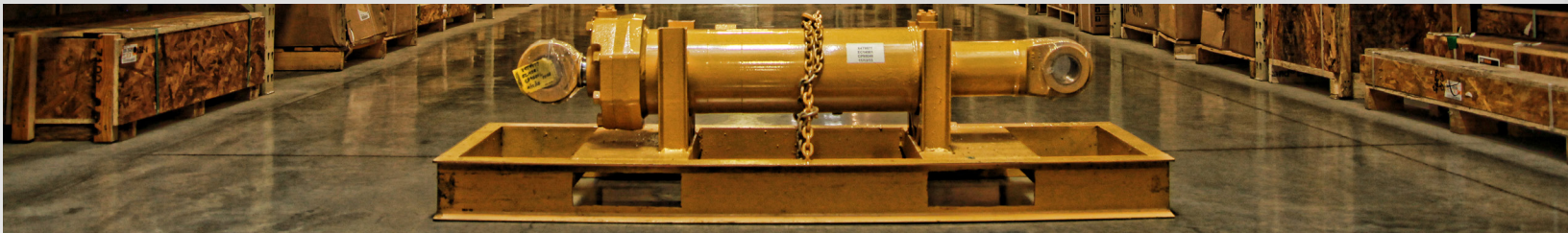
Wyoming MACHINERY COMPANY		CAT
Date _____	N° 221007	
CUSTOMER PROCESSING INFORMATION		
Customer _____	Part # _____	
Work Order# _____	S / D # _____	
Description _____	Date _____	
Date _____	Replaced _____	
Installed _____	Part Hours _____	
Equip Hours _____	Equipment Serial # _____	
Equipment Serial # _____	Possible Warranty Yes _____ No _____	
_____ Unused Credit Returned _____	_____ Loaner Track	
_____ Repair & Return _____	_____ Other	
_____ Core Return _____	Comments: _____	
Brought in By _____ Unit# _____		
Wyoming MACHINERY COMPANY		CAT
Date _____	N° 221007	
CUSTOMER PROCESSING INFORMATION		
Part# _____	Equip Hours _____	
Equip Serial# _____	Date Replaced _____	
Part Hours _____	_____ Loaner Track	
_____ Unused Credit Return _____	_____ Core Return	
_____ Repair & Return _____	Sale Document or S.O.# _____	
Comments: _____		

Component Rebuild Center

Caterpillar machines are designed so that components can be rebuilt several times over the life of the machine—allowing customers to benefit from maximum performance and reliability throughout the life of their equipment. Wyoming Machinery Company's Component Rebuild Center (CRC) helps our customers achieve optimum component life and reliability through world-class rebuild practices. Equipped to rebuild and test all major components of the largest equipment Caterpillar produces today, the CRC meets the same safety, quality and contamination standards as the Caterpillar factory.

The CRC features two double-ended Dynamometers, one single-ended Dynamometer with the capacity to hold up to 8000 horse power, twenty rebuild bays, in-house machine and hydraulic shops, tear-down and wash facilities, failure analysis, fuel and rod test areas, and a state-of-the-art paint booth. Every component is thoroughly cleaned, disassembled, and washed prior to entering the service area. Assigned service technician groups follow each component from teardown to final test, reducing errors and lowering repair times. Technicians have on-line parts ordering capabilities in each service bay and parts are delivered directly to each bay allowing service technicians to spend their time completing repairs and less time tracking parts.





WYOMING MACHINERY COMPANY
 5300 West Old Yellowstone Hwy.
 P.O. Box 2335
 Casper, WY 82602
 Phone # (307) 472-1000

**SERVICE DEPARTMENT
 COMPONENT REBUILD CENTER
 SCHEDULING FORM**

FILL IN ALL AVAILABLE INFORMATION THEN
 FAX OR E-MAIL TO:
 FAX # (307) 261-4497

REVISED DATE _____

CRCSchedule@wyomingcat.com

CUSTOMER INFORMATION

CUSTOMER: _____ **YOUR NAME** _____
TODAYS DATE _____ **PHONE:** _____
DATE TO ARRIVE AT CRC: _____ **P.O. #** _____

MACHINE INFORMATION

MACHINE MODEL: _____ **MACHINE SERIAL #** _____
ARRANGEMENT # _____ **MACHINE HOURS** _____
UNIT # _____ **SCRAPER SERIAL #** _____

COMPONENT INFORMATION

COMPONENT NAME _____ **COMPONENT S/N:** _____
COMPONENT ARRANGEMENT # _____ **COMPONENT HOURS:** _____
OT SPEC # _____ **BUDGETED PCR HOURS** _____
WYOMING MACHINERY WORK ORDER # _____ **PREVIOUS R&I COMPONENT W/O #** _____
PREVIOUS REBUILD WORK ORDER # _____ **WYOMING MACHINERY TRACKING or T #** _____

PUT AN X IN ALL BOXES THAT APPLY

RECONDITON BEFORE FAILURE or PCR	<input type="checkbox"/>	POSSIBLE WARRANTY	<input type="checkbox"/>	FRONT	<input type="checkbox"/>
RECONDITION AFTER FAILURE	<input type="checkbox"/>	FAILURE ANALYSIS REQUESTED	<input type="checkbox"/>	REAR	<input type="checkbox"/>
REPAIR ONLY SEE DETAILS BELOW	<input type="checkbox"/>	SOS HISTORY SENT	<input type="checkbox"/>	LEFT	<input type="checkbox"/>
CUSTOMER DESIRES QUOTE	<input type="checkbox"/>	VIMS DOWNLOAD SENT	<input type="checkbox"/>	RIGHT	<input type="checkbox"/>
MACHINE DOWN WAITING ON COMPONENT	<input type="checkbox"/>	PX COMPONENT	<input type="checkbox"/>		

REASON COMPONENT WAS REMOVED

Contingent Damage: (block, crankshaft, head, piston, liner, housings, etc.)
Any Pressures Taken: (type of pressure, spec. and actual)

REQUESTED TURNAROUND TIME: _____

SUBJECT TO CHANGE DUE TO PARTS AVAILABILITY OR OTHER CIRCUMSTANCES BEYOND THE CONTROL OF WYOMING MACHINERY COMPANY

RETURN DELIVERY INSTRUCTIONS:

Utilizing our Component Rebuild Center Scheduling Form will assist you in receiving Wyoming Machinery Company's expert professional services.

Work with your PSSR directly to prepare the information asked of you on this form.

Once the form has been completed and your component has been scheduled and checked into our CRC, reconditioning will be completed based on the scheduler's estimate.

5 Star Contamination Control

WHAT IS CONTAMINATION CONTROL?

- Contamination is anything in the fluid that doesn't belong.
- Particulate contaminants are the most common and controllable. They include such things as dirt, metals, weld spatter, paint flakes, rag fibers, and sealing materials. These can be built in, ingressed and generated internally.
- Heat, water and air also are also contaminants. These combine to break down the oil's chemical composition, forming oil oxidation and acids.

WHY CONTAMINATION CONTROL?

- Customer demand for increased productivity has produced industry trends of electro-hydraulics, higher system pressures and extremely tight internal clearances.
- As a result of these trends, today's fluid systems (hydraulics, transmissions, final drives, engines, fuel) cannot tolerate previously accepted levels of dirt and other contaminants.
- Fluid contamination threatens reliability throughout the life cycle of today's machines and engines.
- Controlling fluid contamination requires a cultural change in the way Caterpillar products are designed, manufactured, maintained and serviced.

BENEFITS OF CONTROLLING CONTAMINATION

- Improved component life and machine performance
- Lower customer costs and increased customer satisfaction
- Extended product and component life
- Reduced hazardous waste generation



Drive Train Shop

Comprehensive service and support.

When your drive train needs service, our professional technicians have the training and tools to get you back to work quickly. We provide off-the-shelf component availability backed by the Caterpillar worldwide parts network.

We'll show you how we can help lower your costs with the highest quality drive train components, a wide range of Exchange parts (including Cat Reman components), and the most comprehensive service and support available.



Track Shop



Work with Wyoming Machinery Company for Longer Undercarriage Life.

Wyoming Machinery Company's full service track shop is capable of complete roller, idler, and track repairs and rebuilds up to a D11. As one of the most important aspects to a track-type machine, we know the importance of a fully equipped facility capable of tackling any track related requests.

Our track shop includes:

- Two subarc welders for idler rebuild
- Two roller presses
- Induction ovens for idler rebuild
- Three track benches

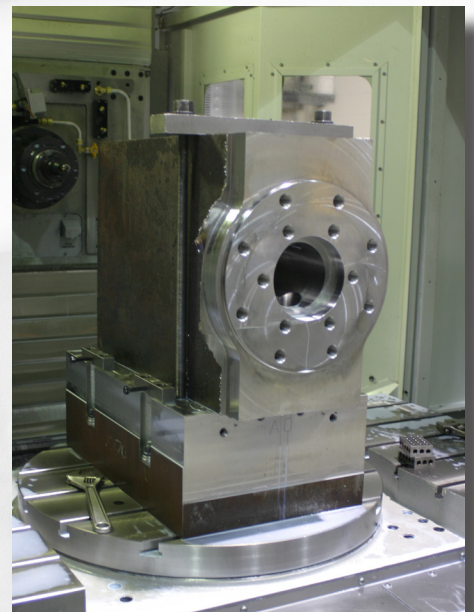
Machine Shop



You can count on Wyoming Machinery Company to meet your machining needs. Milling, boring, surfacing, reconditioning and more are performed by our OSHA and Safeland trained professionals.

Featuring vertical and horizontal lathes and milling machines, ultrasonic crack testing, and precision measurement services.

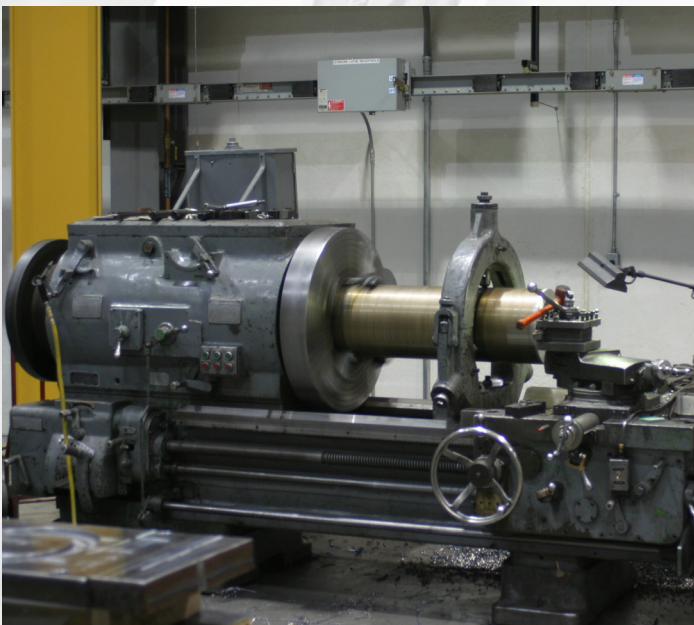
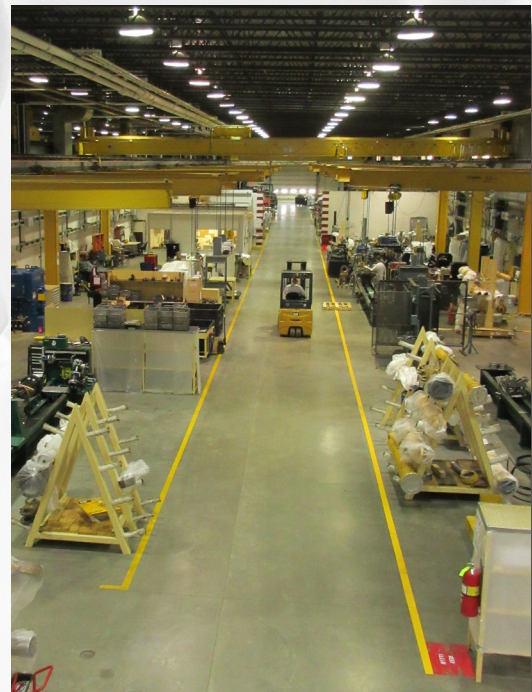
Wyoming Machinery Company is here to support you and the work that you do.



Hydraulic Shop

Today's equipment is hydraulic intensive. So more and more, the decisions machine owners make about their equipment's hydraulics directly impact their bottom line.

Wyoming Machinery Company offers a full-service hydraulic shop that is 5 Star Certified for Contamination Control. This certification means our shop is held at the highest standards for cleanliness and is free of all hazardous waste. Maintaining this certification enhances your component's life and aids in your machine's performance after it has left our facility.



When you bring your components to Wyoming Machinery Company, you can put your trust into our fully qualified Cat Certified technicians to complete your repairs and rebuilds.

We send all components through a quality control inspection prior to releasing them from our shop so you know we got the job done right the first time.

On-site Field Welding & Machining

Wyoming Machinery Company is dedicated to maximizing uptime and minimizing overall machine operating costs.

Our field service technicians are highly qualified and specially trained on all aspects of your machine. Our service vehicles are heavy-duty trucks specially outfitted with cranes, cutting torches, welders, generators and air compressors. All that equipment and training adds up to faster, more efficient service, shorter downtimes and lower overall repair costs for you.

Welding/Machining Service Trucks equipment features:

Single Arm Bearing Mounts and Full Mounts

12" to 24" Boring Head Set

19" Facing/Grooving Tool

18" Adjustable Facing Head

Face Adjustable ID Bearing Mount 5.75" to 18.5" diameter

Bore Welder Interface Kit

Compact Facing Torch

Portable Mill

Diesel Powered Welder

Air Compressor

Crane

Cutting Torch / Plasma



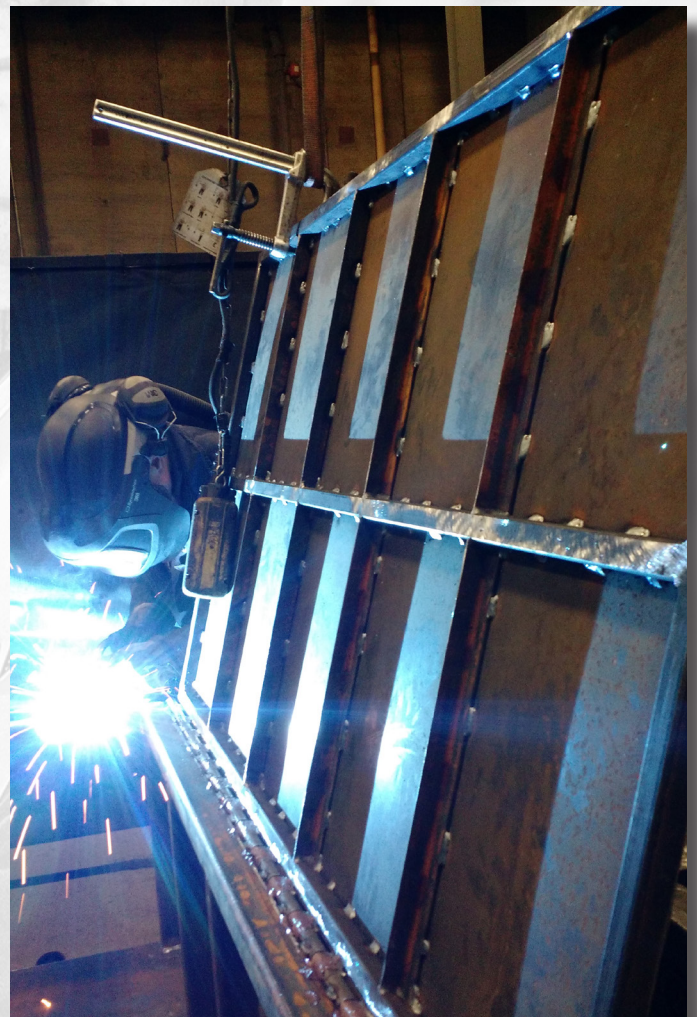
Weld Shop

With over **205** years of combined working experience, each of our Weld Shop Technicians are AWS D1.1 certified meeting Caterpillar's highest standards and take in orders at your schedule's demand.

This allows you to get your repairs done when you need them done to keep you on schedule.

We cover it all:

- New fabrication and assembly
- Major and minor weld repair work
- Regrouser track shoes
- Main frame welding and reconditioning of bores
- Moldboard reconditioning
- Circle reconditioning
- Dozer refacing
- Bore reconditioning
- Journal reconditioning
- Swing frame reconditioning
- Automated application of Abrasion Resistant Material (ARM)
- Minor cosmetic work
- Custom weld work
- CNC Plasma/ Oxy fuel cutting table
- In house Drafting, G/M- code and CMI services.
- Steel, Cast, aluminum and stainless.



Don't have time to bring your repairs to us? No problem. With our three state-of-the-art field Welding and Machining Service trucks and trailers, we'll come to you. No job is too big or too far for our crew.

Fluid Analysis Lab

New customer demands for Caterpillar equipment are created each day. For this reason, design criteria requires components to operate at faster speeds, higher temperature, and more extreme pressures. Monitoring of equipment parameters is now more critical than ever. Caterpillar EM solution is a tool, which uses electronic data, fluid analysis, machine inspections, etc. to aid in this process. Fluid analysis is an integral part of the EMSolutions Condition Monitoring process. Caterpillar SOS Services is a fluid analysis process that was developed by Caterpillar to monitor the overall condition of Caterpillar equipment.

At Wyoming Machinery Company, fluids from all different makes and brands are analyzed utilizing the Caterpillar SOS process. Technicians at the WMC Lab run a number of test to determine abnormal wear, oil condition, oil contamination, etc. Data from these tests are used to monitor the machine's health of engines, transmissions, hydraulic components, final drives, gas compression engines, compressors, and more.

Fluid analysis at Wyoming Machinery Company can help maintain your machine's overall health, it can keep small problems from turning into catastrophic issues. Our commitment is to assist customers attain low operating costs, peak performance, and top resale value. SOS analysis is an inexpensive tool that can assist with this commitment. It does not matter the brand or the type of equipment, condition monitoring via fluid analysis can be done through the WMC Fluid Analysis lab.

Contact Wyoming Machinery Company Fluid Analysis Lab for more information. 307-472-1000 / x-1258



Parts.Cat.Com

Parts.Cat.Com (PCC) makes it quick and easy to buy your Cat parts online. Simply register, find the parts you need, calculate delivery, and order at the click of a button.

With **PCC** you can buy frequently used parts the easy way. Whether you're running on a machine or an entire fleet, registering on **PCC** is quick, easy, and comes with many business benefits.

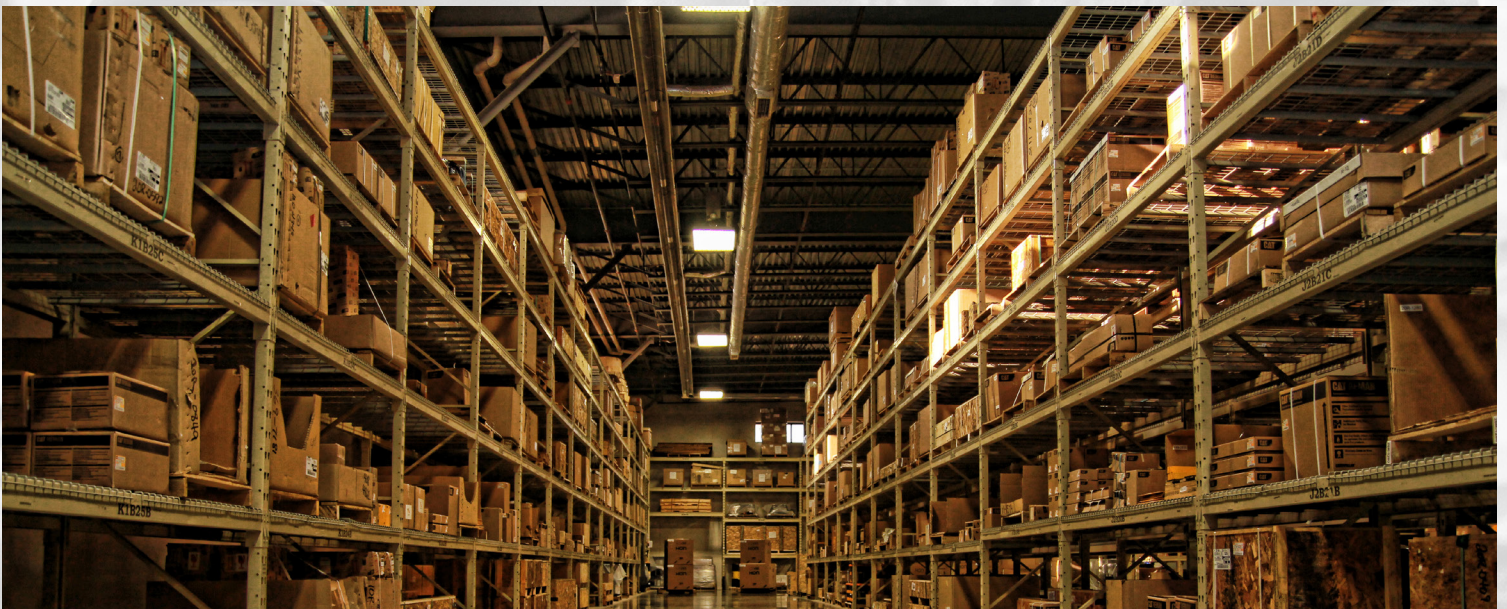
Getting Started

To begin using the **PCC** system:

1. Go to **www.wyomingcat.com** and click the **Order Parts Online** button in the upper right hand corner.
2. Enter your location.
3. Select **Wyoming Machinery Company** as your dealer store.

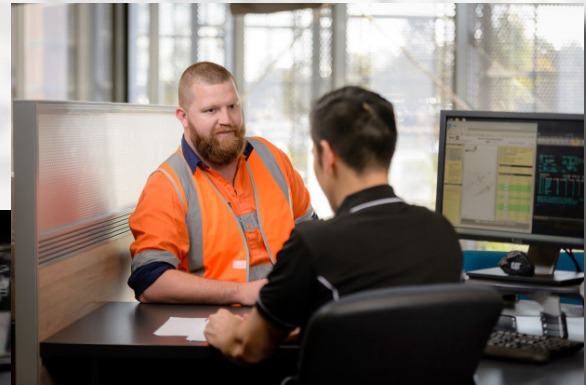
UPDATE/COMPLETE any necessary account registration fields and click "Submit." Wyoming Machinery Company will send you an e-mail confirmation that your **PCC** system is ready to go.

To use the **PCC** system in the future, log on to **www.wyomingcat.com** as a returning user and click on the **Order Parts Online** button. You can also use existing Parts Store credentials.



Warranty Services

- *Caterpillar Limited Battery Warranty*
 - *General Service Warranty*
 - *Caterpillar Limited Warranty*
 - *Component Rebuild Center Warranty*
 - *Over the Counter Warranty*
-



Please see your PSSR for current warranty.

CAT Financial Insurance Services

CAT Financial Insurance Services

- *Engine*
- *Machine*
- *Work Tool*

CAT FINANCIAL INSURANCE SERVICES - PROTECTION PLANS

Inventory Protection Plan PROGRAM OVERVIEW

You've made a substantial investment in your inventory and you rely on it to keep your business going. You can protect your inventory with one powerful policy. The Inventory Protection Plan from Cat Financial Insurance Services knows the challenges you face in the equipment sale and rental business.

Competitive Coverage

This plan provides protection against covered damage or loss to your inventory, including a parts inventory option. The Inventory Protection Plan protects your interest in new and used Caterpillar and allied equipment inventory when you need it and where you need it. Your equipment is protected whether it's idle on your premises; on loan or rented; being used for demonstration purposes; or in transit.

Contact your PSSR for further information.

Thank you for your business

WyomingMachineryCompanywouldliketothankyoufortrustinginourteam.
Your success is the driving force behind our success.



Wyoming MACHINERY
COMPANY



CASPER
(307)472-1000

CHEYENNE
(307)638-7900

GILLETTE
(307)686-1500

ROCK SPRINGS
(307)362-6500